

Senior Update- Week of November 28th



- **CSS Profile** – As previously mentioned, students should be checking to see if any of the colleges they are applying to require the CSS Profile. A listing was given in the folder at the August night college meeting. We will be reviewing the particulars of the CSS Profile at the Financial Aid night (December 14th); however, students should know what schools will require this form. If anyone needs help with the CSS information, please let Miss Hoyt know.
- **Optional Grade Report** – A reminder that if any students want Miss Hoyt to update colleges on their grades (especially if there has been improvement in class grades since the first quarter report card), please let

her know and she will send out the Common Application Optional Grade Report.



- **Updating Colleges** – If seniors had their applications sent out by the end of October – and if the application deadline is Regular Decision – they should now start updating the colleges. This relates to always letting colleges know students really want to be accepted. It demonstrates to the colleges that seniors realize they need to keep working hard on academics and continue being involved in extracurricular activities. We should be updating the colleges (for regular decision) about every three weeks to a month. Please leave Miss Hoyt a note if you are in this situation with the regular decision. She will then meet with you to explain what should be done. It does not involve a great deal of work – but is extremely important in showing colleges you are serious about getting accepted.
- **Contacting Departments** – If a student is really serious about a particular college (or the top three colleges the student has applied/will apply to), a reminder that he/she should be contacting a department chairperson/member of the intended major. Students should do some research on the school's website in that

department to see what individual professors are working on for research, writing, etc. Even if the department members can not do anything in regards to acceptance (although if they are impressed by a student, they usually do try to contact admissions), it serves the student well to make contacts.... Those professors could end up being a student's major professor – and he/she will remember that initiative the student took. If anyone needs help with this, please let Miss Hoyt know.



Scholarships



- Timothy and Palmer W. Bigelow Scholarship** – For students with an interest in/intended major in landscape architecture who are residents of Rhode Island. Awards are for \$2,000. For more specific information and application guidelines, go online at: [\(www\)hriresearch.org](http://(www)hriresearch.org)
- The Fred Rogers Memorial Scholarship** – For students with an interest in/intended major in education, early childhood education, film/video, music, or radio/television/film. For more specific information, and application guidelines, go online at: [\(www\).emmysfoundation.org](http://(www).emmysfoundation.org)
- Ritchie-Jennings Memorial Scholarship** For students with an interest in/intended major in criminal justice/law enforcement, accounting, business, or finance. Awards range from \$1,000 to \$10,000. For more specific information, and application guidelines, go online at: [\(www\)acfe.com/about/foundation.asp?copy=scholarship](http://(www)acfe.com/about/foundation.asp?copy=scholarship)



- **AFSA Scholarship Programs –**

This organization has numerous scholarship opportunities for dependents of active service person or veteran of the Air Force. To review the various opportunities, go online at: www.hqafsa.org

- **Air traffic Control Non-Employee Student**

Scholarship – For students with an interest in/intended major in aviation. Awards range from \$1,500 to \$2,500. For more specific information, and application guidelines, go online at : www.atca.org --- this website has other scholarship opportunities related to aviation.

- **The Aircraft Electronics**

Association – The organization is sponsoring numerous scholarships related to aviation, aviation repair, and/or electronics. For more specific information on the different scholarship opportunities, go online at: www.aea.net/educationalfoundation

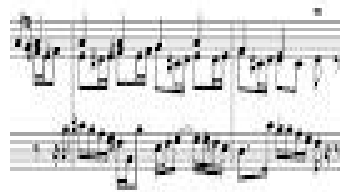


- **AFSCME Family Scholarship** – For seniors who are dependents of active or retired State, County, and Municipal Employees. Awards are for \$2,000. For more specific information, and application guidelines, go online at: ([www](http://www.afscme.org))afscme.org
- **AHEPA Educational Foundation Scholarships** – For students who are of Greek descent. Awards are for \$2,000. For more specific information, and application guidelines, go online at: ([www](http://www.ahepa.org)).ahepa.org
- **American Hotel and Lodging Educational Foundation** – The organization has numerous scholarship opportunities for students with an interest in/intended major in hotel/restaurant management of hospitality administration/management. For more specific information on the various scholarships, go online at: ([www](http://www.ahlef.org)).ahlef.org
- **American Institute of Architects** – The organization is sponsoring scholarships for students with an interest in/intended major in architecture. For more specific information, go online at: ([www](http://www.aia.org/education/AIAS075223)).aia.org/education/AIAS075223

- **American Legion Eagle Scout of the Year** – For seniors who have achieved the status of Eagle Scout. Awards range from \$2,500 to \$10,000. For more specific information, and application guidelines, go online at: www.legion.org
- **AFCEA Cyber Studies Scholarship** – For students with an interest in/intended major in computer/information sciences, information systems of engineering, computer. Students must have a GPA of at least 3.0. Awards are for \$5,000. For more specific information, and application guidelines, go online at: www.afcea.org
- **MG James Ursano Scholarship** – Student must be a dependent of an active or retired veteran of the Army. Students must also have a GPA of at least 2.0. Awards range from \$500 to \$3,500. For more specific information and application guidelines, go online at: www.aerhq.org
- **Best Teen Chef Culinary Scholarship Competition** – For students will an interest in/intended major in culinary arts. For more specific information, and contest guidelines, go online at: www.artinstitutes.edu/btc

- **Morton Gould Young**

Composer Awards – For students with an interest in/intended major in music, performance, composition. Awards ranged from \$750 to \$2,500. For more specific information, and competition guidelines, go online at: www.ascapfoundation.org



- **Print and Online News Grants**

– For students with an interest in/intended major in journalism. Awards are for \$1,000. For more specific information, go online at: www.aaja.org

- **Best Buy/@15 Scholarship**

Program – Students must have strong academics and community service. Award are for \$1,000. For more specific information, go online at: www.bestbuyinc.com/community_relations



- **BMI Foundation, Inc.** – This is a scholarship opportunity for music composition. Awards range from \$500 to \$5,000. For more specific information, go online at: www.bmifoundation.org ---- This website also has other scholarship opportunities related to performing arts, music, and composition of original songs.

- **Frank D. Visceglia Memorial Scholarship** – For seniors who have achieved Eagle Scout status. Awards are for \$1,000. For more specific information and guidelines, go online at: www.advancement.ppbsa.org/scholarship.htm

- **BG Scholarship** – Awards are for \$400. Students must have at least a GPA of 2.0 and have demonstrated community service. For more specific information and application guidelines, go online at: www.bgscholarship.com/scholarship

- **Broadcast Education Association** – The organization is sponsoring various scholarships for students with an interest in/intended major in radio, television, and/or film. For more specific information, go online at: www.beaweb.org

- **Young Epidemiology Scholars**

Student Competition – This is a research project “that applies epidemiological principles to health related areas”. It is for students with an interest in epidemiology, sociology, health sciences, or mathematics. Awards range from \$1,000 to \$50,000. For more specific information and application/research guidelines, go online at: www.collegeboard.com/yes

- **Dolphin Scholarship** – For the dependent of a U.S. Navy active/veteran military. Awards are for \$3,400. For more specific information, go online at: www.dolphinscholarship.org

- **Eastern Orthodox Committee of Scouting** – Student must be Eastern Orthodox, an Eagle Scout or Gold Award recipient. Awards range from \$500 to \$1,000. For more specific information, go online at: www.eocs.org



- **Federal Employee Education**

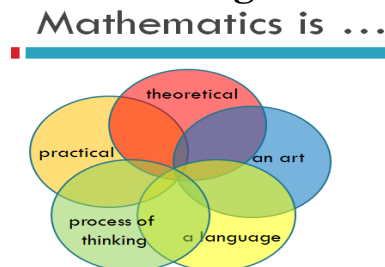
Scholarship – For students who are dependents of employees of the Federal U.S. Government. “Current civilian federal and postal employees are eligible”. Awards range from \$500 to \$2,000. For more specific information, go online at: ([www](http://www.feea.org)).[feea.org](http://www.feea.org)

- **Herbert Buschong**

Scholarship – For students with an interest in/intended major in writing, journalism. Awards range from \$200 to \$2,000. For more specific information and essay guidelines, go online at: ([www](http://www.ffrf.org)).[ffrf.org](http://www.ffrf.org) - this website also has other writing scholarship opportunities

- **Great Minds in Stem Scholars**

Program – For students with an interest in engineering, mathematics, science, or technology. To be eligible for consideration, students must have a GPA of at least 3.0, leadership, and community service. Awards range from \$500 to \$5,000. For more specific information and application guidelines, go online at: ([www](http://www.greatmindsinstem.org)).[greatmindsinstem.org](http://www.greatmindsinstem.org)



Congratulations on Recent College Acceptances



**Joe Cappuccio – Fordham
University**

**Sara Rauwolf – University of
Connecticut (\$ 12,576 per year
renewable scholarship),
University of Vermont**

